

*PRESENTING*



**ONE**

ONE STOP SOLUTION FOR  
SMARTER CONSTRUCTION

*EMPOWERING CONSTRUCTION WITH  
ENGINEERING INTELLIGENCE*



World's Best  
GPH Quantum  
Steel



**ispat**

# GPH ONE

## ***QUALITY CONSTRUCTION CHALLENGE***

The construction industry is often plagued by inefficiencies and fragmented supply chains that lead to:

- Design Gap
- Delays
- Wasted Materials
- Quality
- Cost overruns

These challenges create a complex environment where speed and reliability alone are not enough. Projects need solutions that optimize not just time, but also cost, material usage, and structural integrity. The industry demands smarter construction.

GPH One provides integrated solutions that address these challenges ensuring efficiency, quality, and precision from design to delivery.

---

## ***CONSTRUCTION SITE'S USUAL HASSLES REGARDING REBAR USAGE***

- Space Constraint- Limited space to install either a cutting or bending machine or store inventory of straight rebars in site
- Placement regulation of Govt. authority beside road
- Rusting problem due to long stay in open ground
- Accurate fabrication difficulty
- Labor management complication
- Inventory management related issues
- Additional lead time
- Wastage due to wrong fabrication by unskilled labor
- Safety is a concern as the risk of injuries is high during cutting and bending of rebar

# THE WORLD OF



## ***QUICK DELIVERY***

Fast delivery of pre-cut, pre-threaded, and pre-bent steel bars to reduce on-site delays. This streamlined supply helps minimize project delays and supports faster construction timelines with enhanced efficiency.



## ***QUALITY PRODUCTS & SERVICE***

We deliver precision-engineered products & services that ensure strength, safety, and long-term durability. Specially, our high-grade, certified rebar products are fabricated to exact design specifications, using advanced machinery and strict quality controls. From accurate bar bending schedules (BBS) to on-time delivery and expert support, our end-to-end service guarantees efficiency, reliability, and peace of mind for every construction project. Our aspiration is to extend our service in such a level that we can empower the construction industry with engineering intelligence.



## ***QUANTUM REBAR***

Our state-of-the-art Quantum Electric Arc Furnace (EAF) technology sets a new benchmark in sustainable steelmaking. It ensures cleaner production, lower energy consumption, and consistent quality. The result rebars with high-strength, suitable for earthquake resistant design having superior weldability and corrosion resistance. Trusted by engineers and builders, our rebars deliver unmatched performance in modern construction.





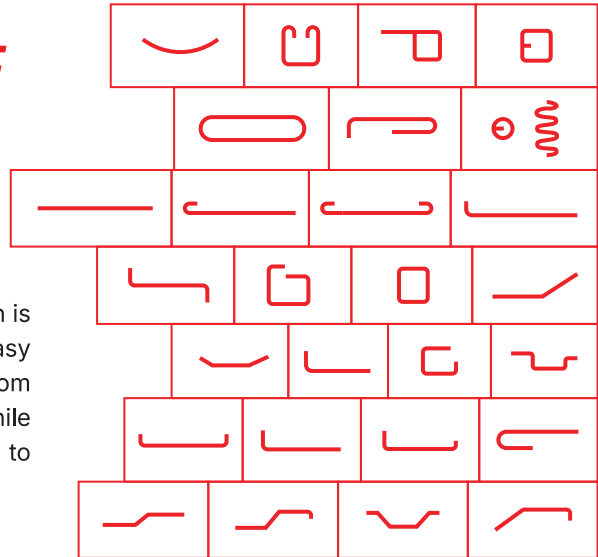
## DESIGN OPTIMIZATION

Design Optimization is a specialized structural engineering service focused on re-evaluating and optimizing previously designed but not yet implemented structural designs. This service delivers an innovative and technologically advanced solution tailored to meet the technical specifications, including specified yield and tensile strength, using the most suitable rebar grades available. Conducted by a skilled and experienced design team, the process ensures a compact and efficient structural design. The outcome is an optimized structure that facilitates the most effective use of rebar, reduces material usage, and significantly lowers overall construction costs for the customer.



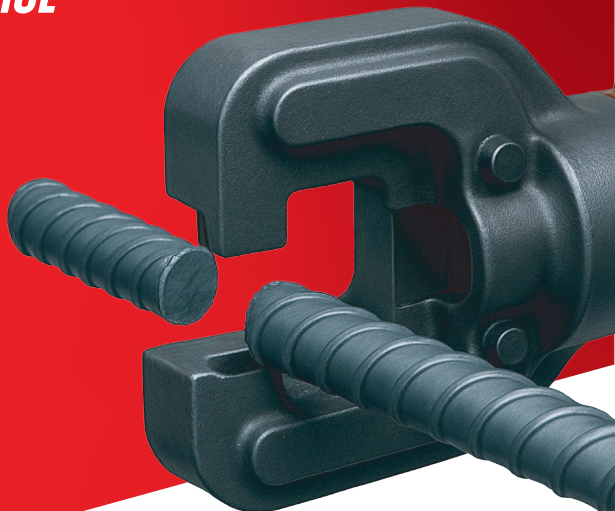
## BAR BENDING SCHEDULE

Preparation of drawings containing rebar detailing, which lead to the creation of a Bar Bending Schedule (BBS) that includes detailed rebar specifications such as unique rebar marks, lengths, diameters, bend angles, quantities, and more. All this information is summarized in a single tabular format for easy understanding. World-renowned software from the UK and USA is used for rebar detailing, while advanced European software is employed to convey optimized BBS data to the machinery.

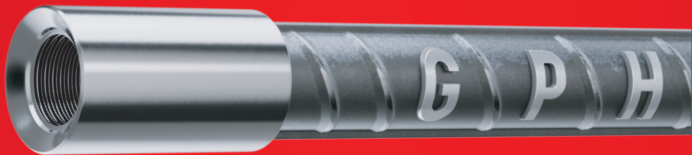


## CUT AND BEND SERVICE (Q-CUT & Q-BEND)

Customized length of the rebar & bending of them at required angles/hooks/bending diameter in accordance with the project's requirement following relevant standards of Bangladesh National Building Code (BNBC) and ACI. Cut & Bend production process involves automated world class European machines at state-of-the-art factory.







## **ROLLED THREAD (Q-THREAD)**

Roll threading of rebar for the use of mechanical coupler strengthens the rebar by aligning its grain structure, unlike cut threading which disrupts it. It offers better dimensional accuracy, preserves the outer martensite layer (reducing material waste), and enhances fatigue resistance. Roll threads also introduce fewer stress risers, making them more durable and reliable under load.

## **STIRRUPS/TIES (Q-RINGS)**

High quality Stirrups/Ties for beams, columns etc. with proper degree of angle and length of hooks as per the requirement of code, design standard made with automated machines. Stirrups/Ties play a vital role in earthquake resistance of a building for which it is necessary to prepare those as per the seismic design requirement to avoid inaccuracy in the manually prepared Stirrups/Ties in regular construction sites.



Triangular Stirrup



Diamond Stirrup



Rectangular Stirrup



Square Stirrup



Circle Stirrup



Spiral Stirrup

## **EXPERT MEET**

Access to expert consultations for complex project designs and solutions. These professionals assist in structural design optimization, material efficiency, and compliance with engineering standards.





# HOW ONE WINS

## **LESS TIME**

No on-site cutting and bending. No lapping.  
No confusion. Just plug-and-play.

## **LESS MONEY**

Fewer overlaps. Less wastage. More value  
through vetting.

## **LESS STRESS**

A single, streamlined solution, from design  
to delivery.

## **ENGINEERING INTELLIGENCE**

### **SMART CONSTRUCTION**

[Design Optimization | Precision Cutting & Bending | Bar Bending Schedule |  
Stronger Structural Integrity | Earthquake Resistant Hook Based Stirrups]

### **SEAMLESS EXECUTION**

[Pre-cut & Pre-Bend Steel Bars | Faster Installation | Minimal Wastage |  
Cost Efficiency | Minimal Inventory Carrying]

#### **Registered Office**

Crown Chamber, 325 Asadgonj, Chattogram-4000, Bangladesh  
Tel: +88 031 631460, Fax: +88 031 610995, Email: [info@gphispac.com.bd](mailto:info@gphispac.com.bd)

#### **Dhaka Office**

Land View Commercial Center (7th & 8th Floor), 28 Gulshan North C/A,  
Circle-2, Dhaka-1212, Bangladesh  
Tel: +88 02 222260177, 222280366, Email: [salesdhk@gphispac.com.bd](mailto:salesdhk@gphispac.com.bd)

#### **Corporate Office & Plant**

Masjiddah, Kumira, Sitakunda, Chattogram, Email: [factory@gphispac.com.bd](mailto:factory@gphispac.com.bd)

[www.gphispac.com.bd](http://www.gphispac.com.bd)